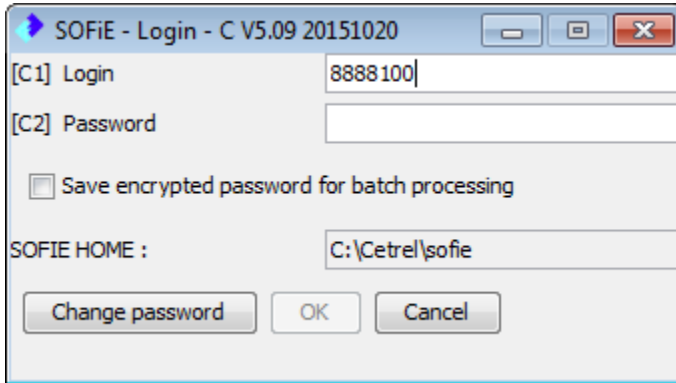
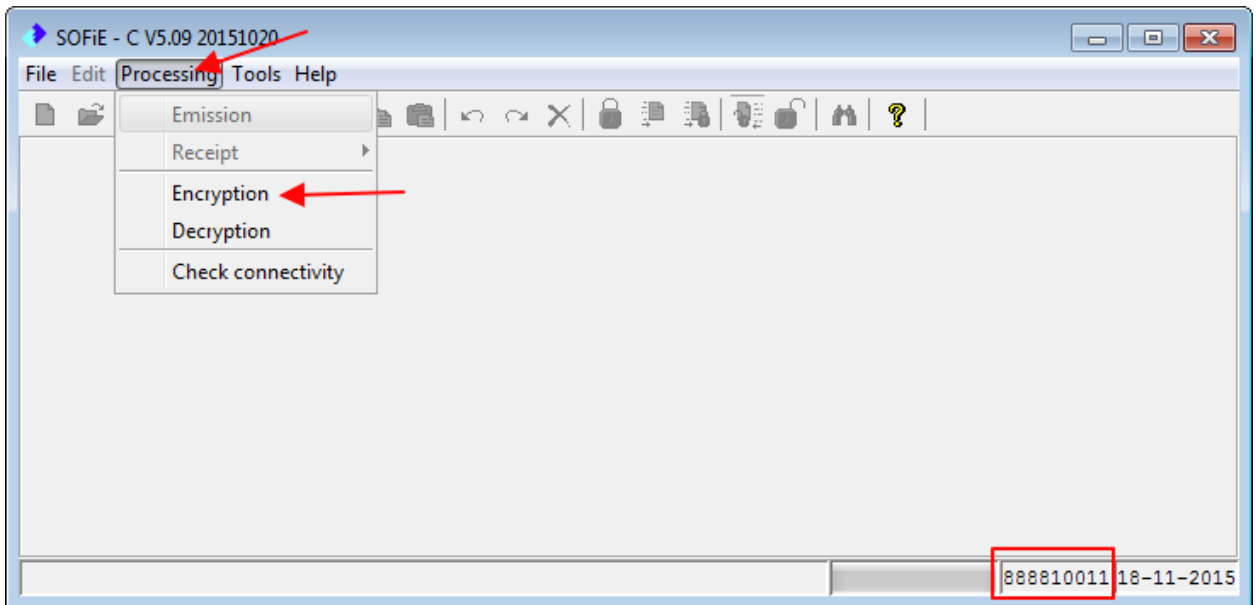


## SOFiE-SORT Encryption process with Crypt module

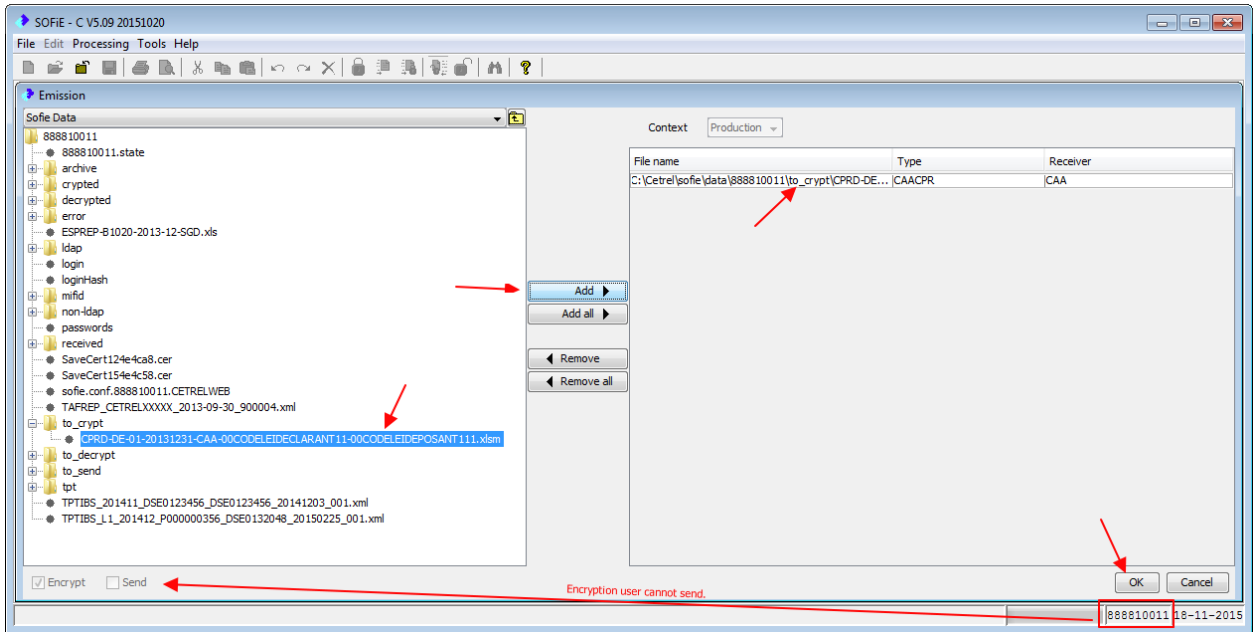
- 1- Open SOFiE-Encryption user. Usually it's the one that number is smaller. In my example 888810011 is the encryption and 888810012 the transportation. You can check also on your contract subscription.



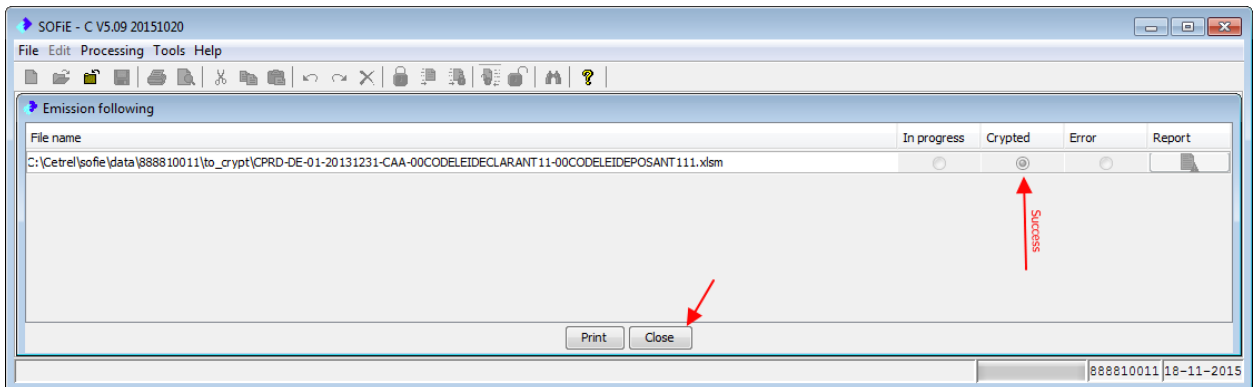
Use processing menu to make an encryption



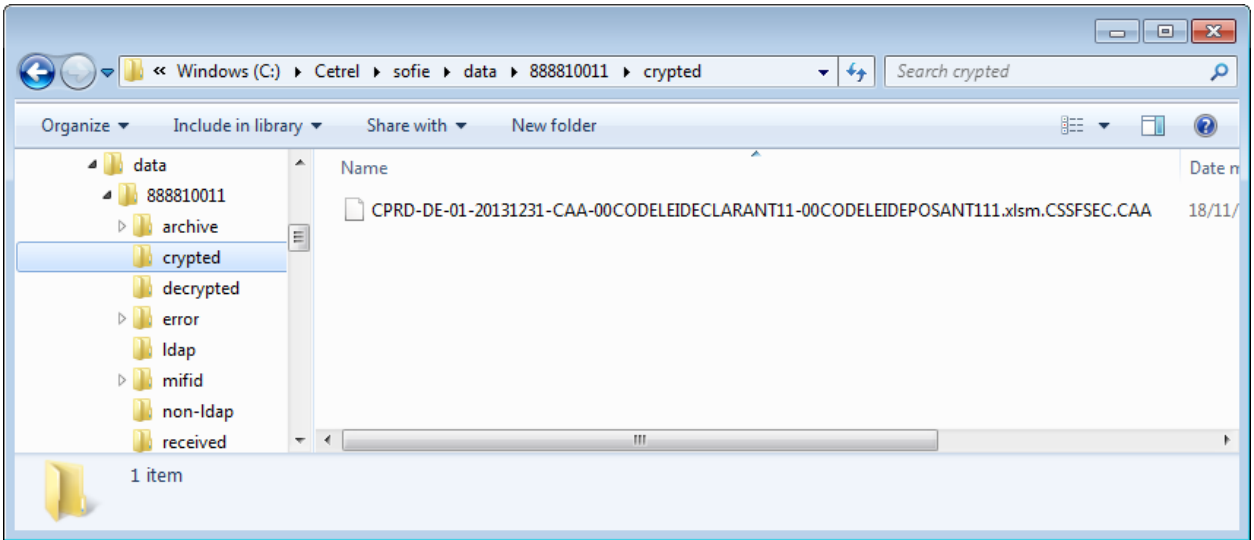
Browse to find the file to crypt. Here it's under SOFIE\_HOME\data\888810011\to\_crypt



Successfully encrypted, close crypt user. The encrypted file is automatically deposited on encrypted folder (default folder is SOFIE\_HOME\data\888810011\crypted)

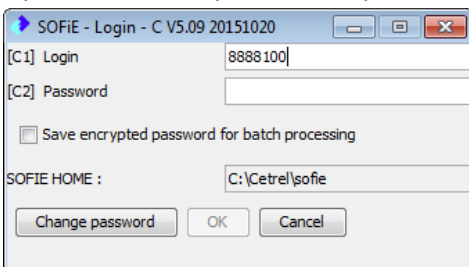


You can check with Windows explorer. File name has automatically changed. Here the file name is CPRD-DE-01-20131231-CAA-00CODELEIDELARANT11-00CODELEIDEPASANT111.xlsm.CSSFSEC.CAA

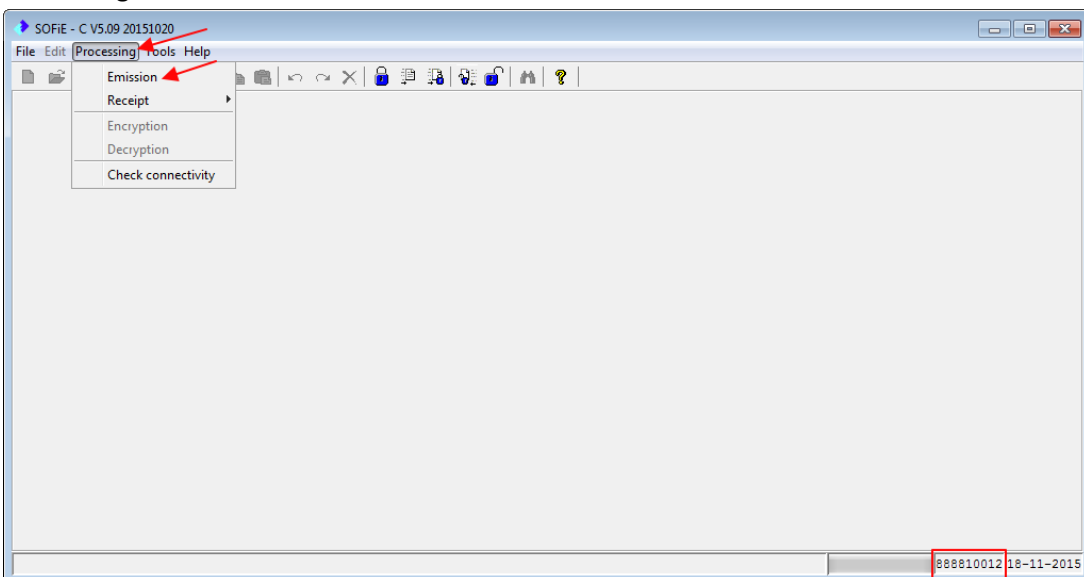


## SOFiE-SORT Encryption & send process with Transport module

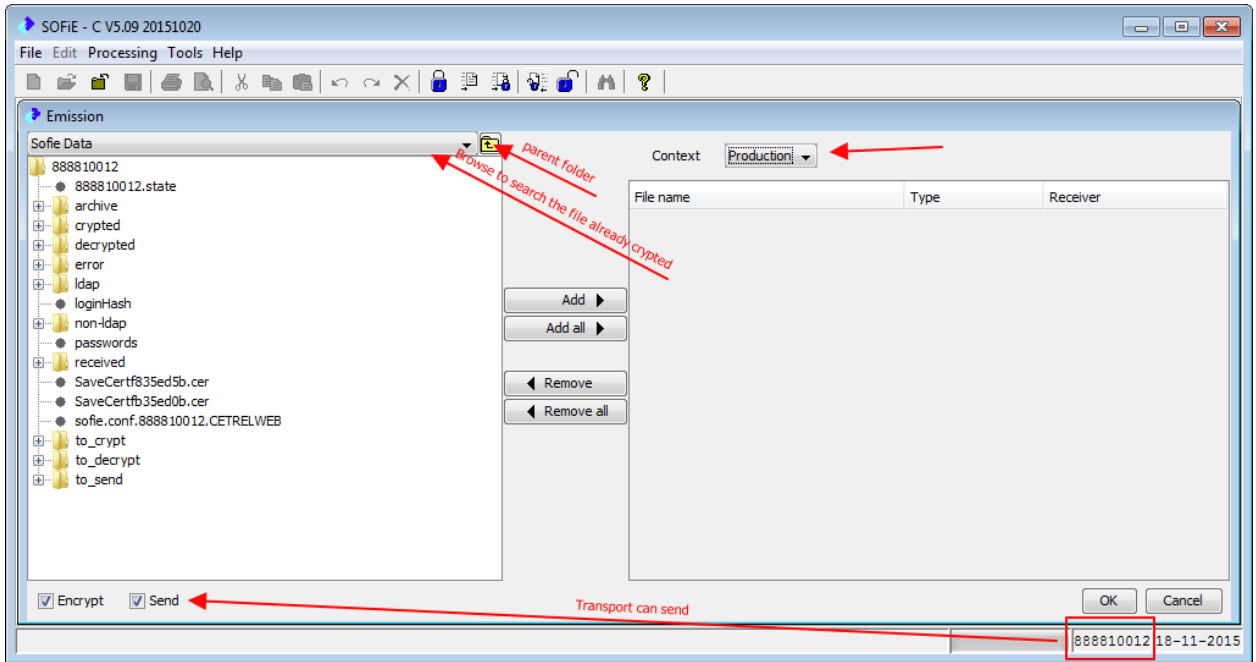
- 2- Open SOFiE Transport user to process encrypted file done on 1<sup>st</sup> point.



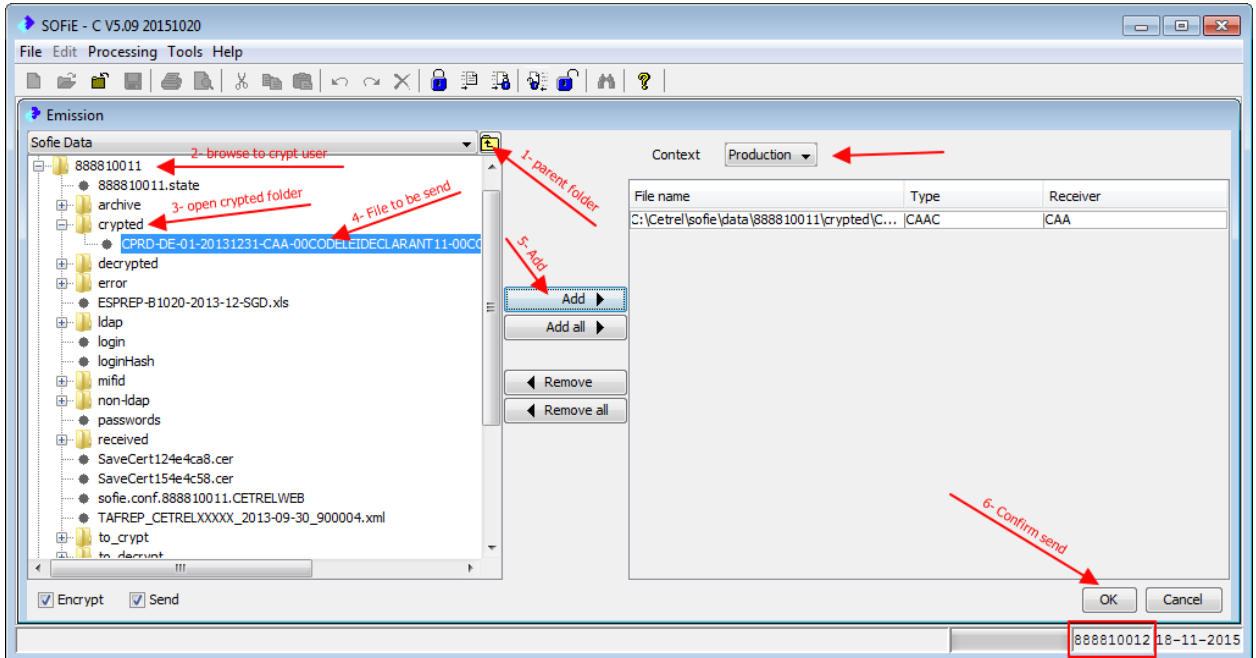
### Processing Emission



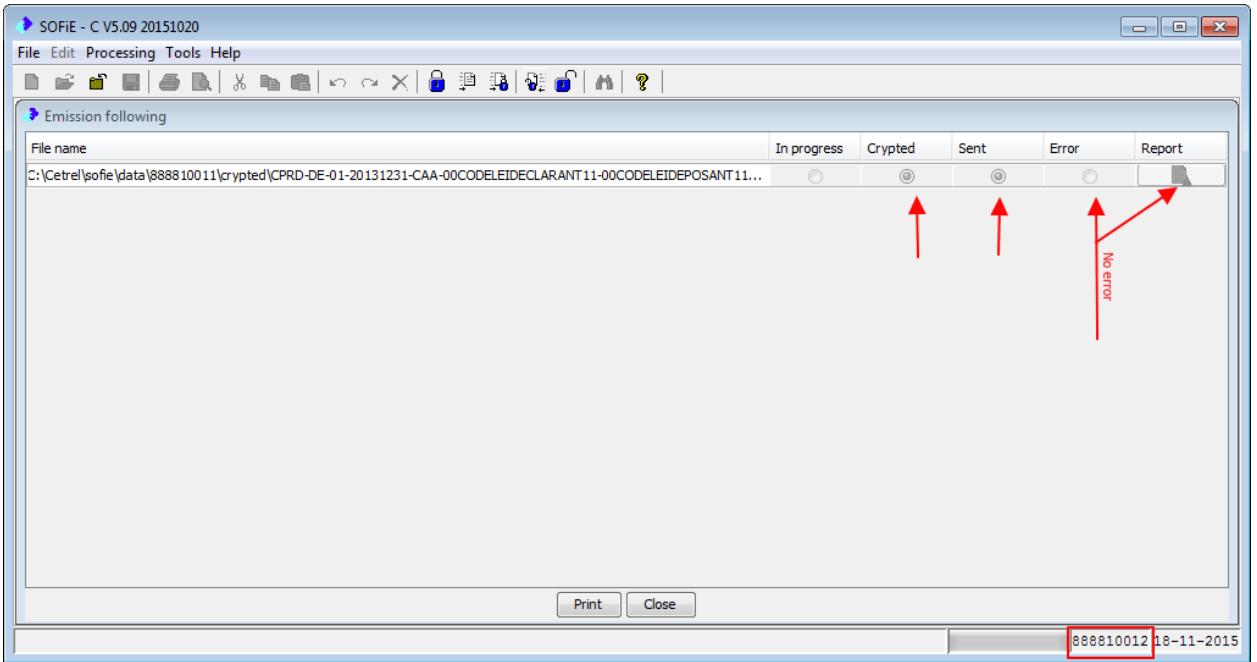
Use SOFiE browser to find the file



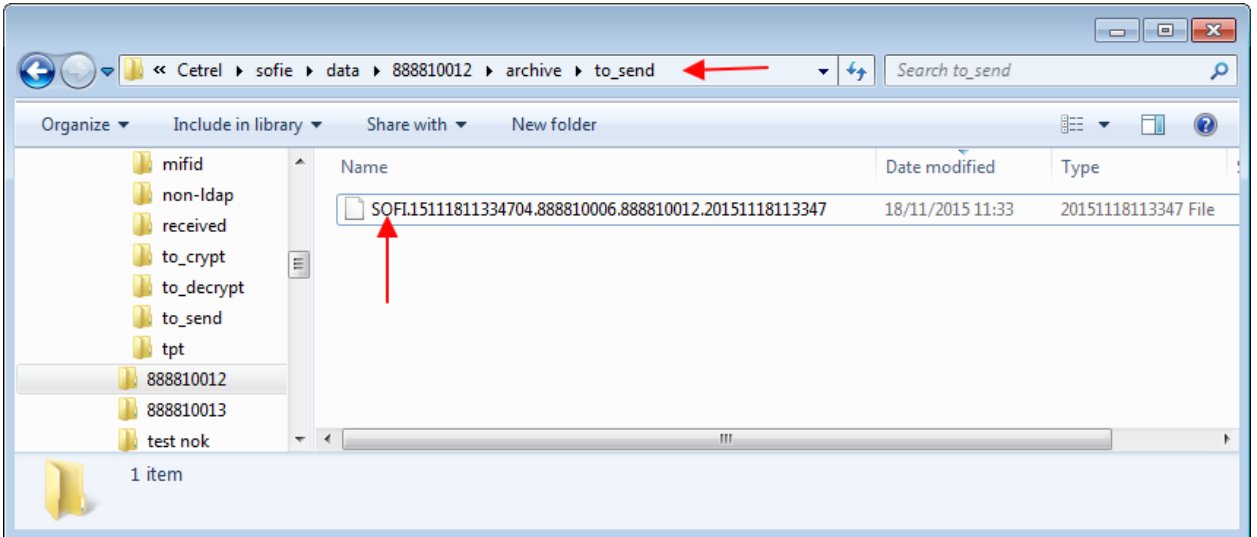
Add the encrypted file (on the 1<sup>st</sup> point) to encrypt it again and send.



File is successfully sent. In case of error, Report log is available.

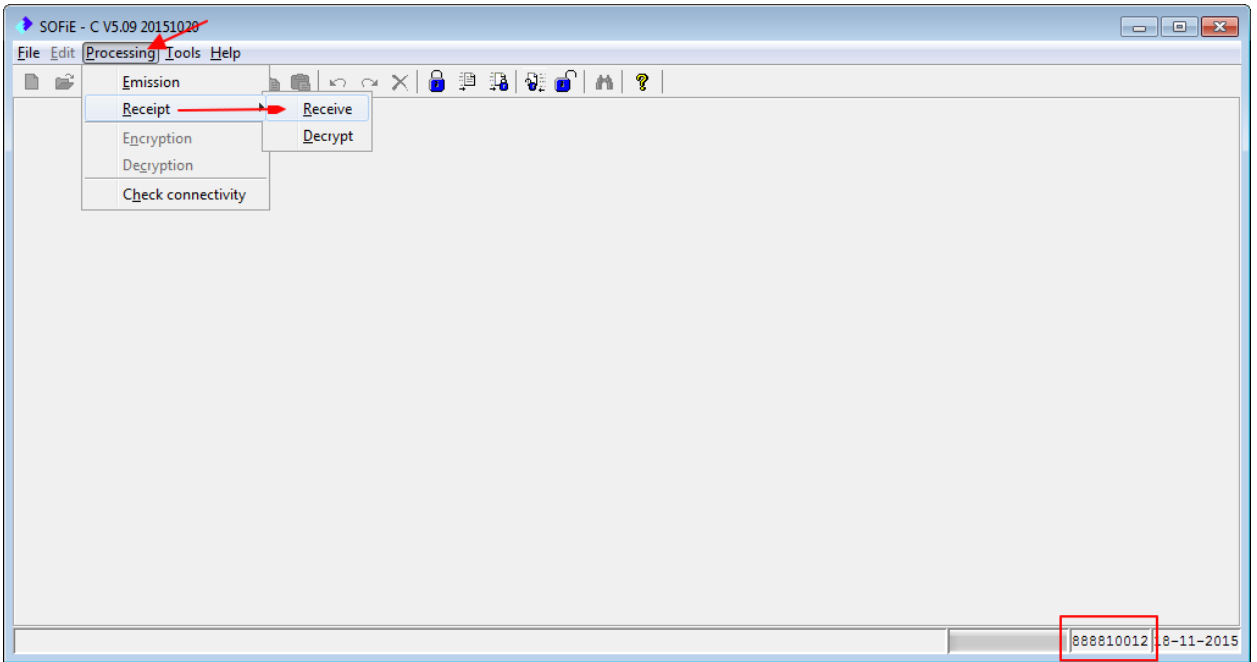


File is automatically renamed within name begins with SOFI and it's deposited on SOFIE\_HOME\data\888810012\archive\to\_send

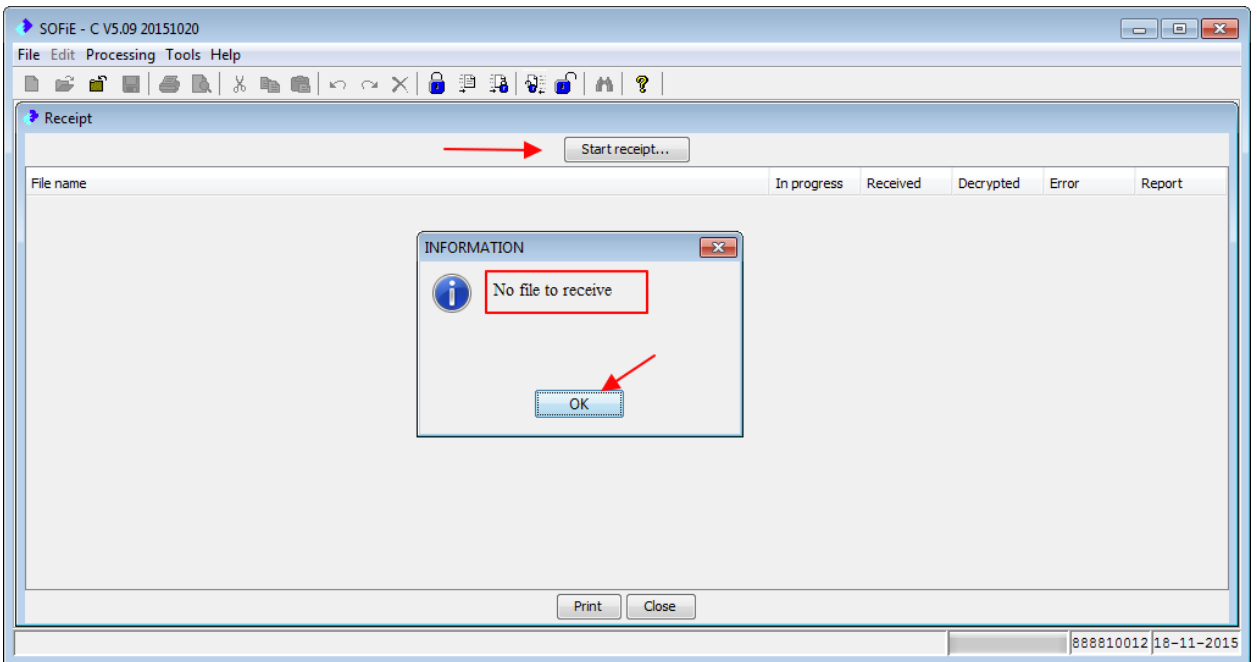


## SOFiE-SORT (Automatic) Receive and decrypt process with Transport module

- 3- Receiving and decrypt a file automatically.

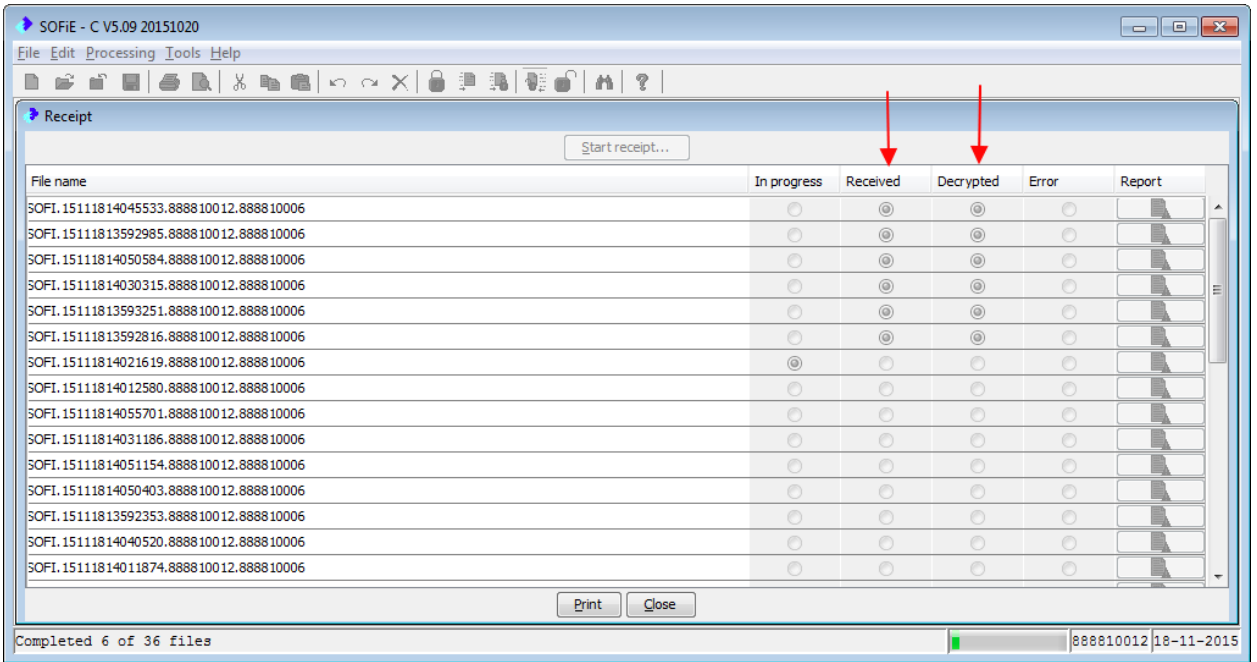


If there is no file to receive on SOFiE server the following screen appears.



In case a file is available, it will be received and automatically decrypted. Default deposit folder is SOFiE\_HOME\data\888810012\decrypted\Production

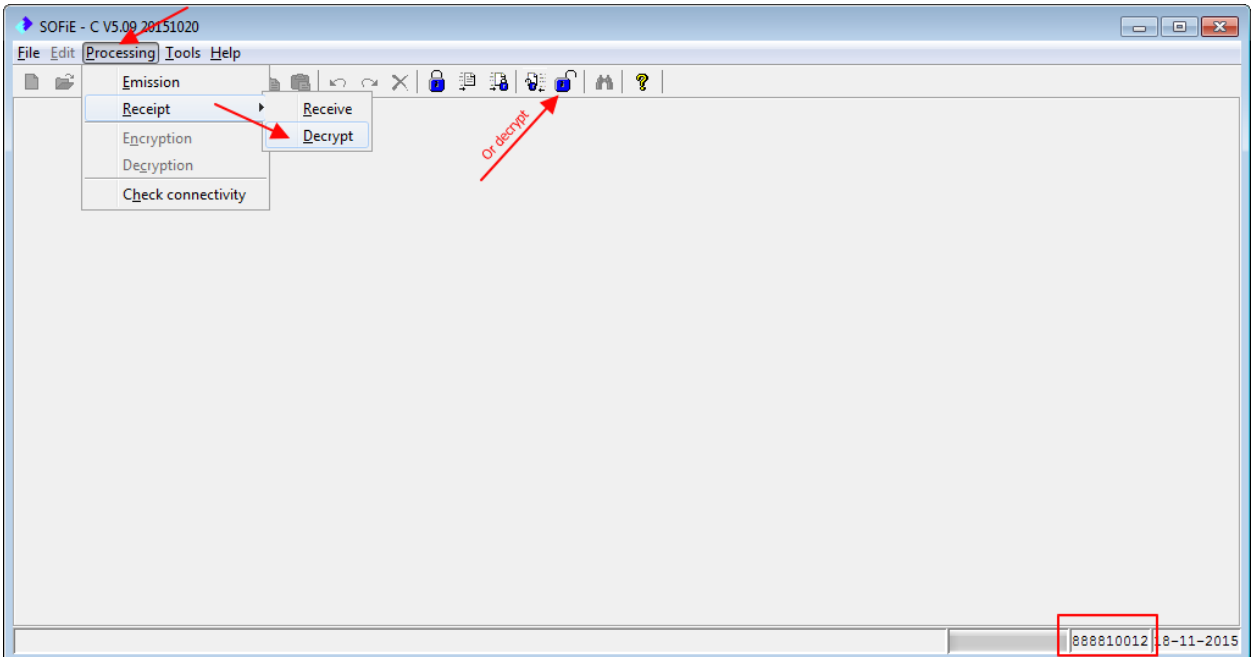
If an error occurs during decryption, the file and its corresponding error log will be deposited on SOFiE\_HOME\data\888810012\error\to\_decrypt



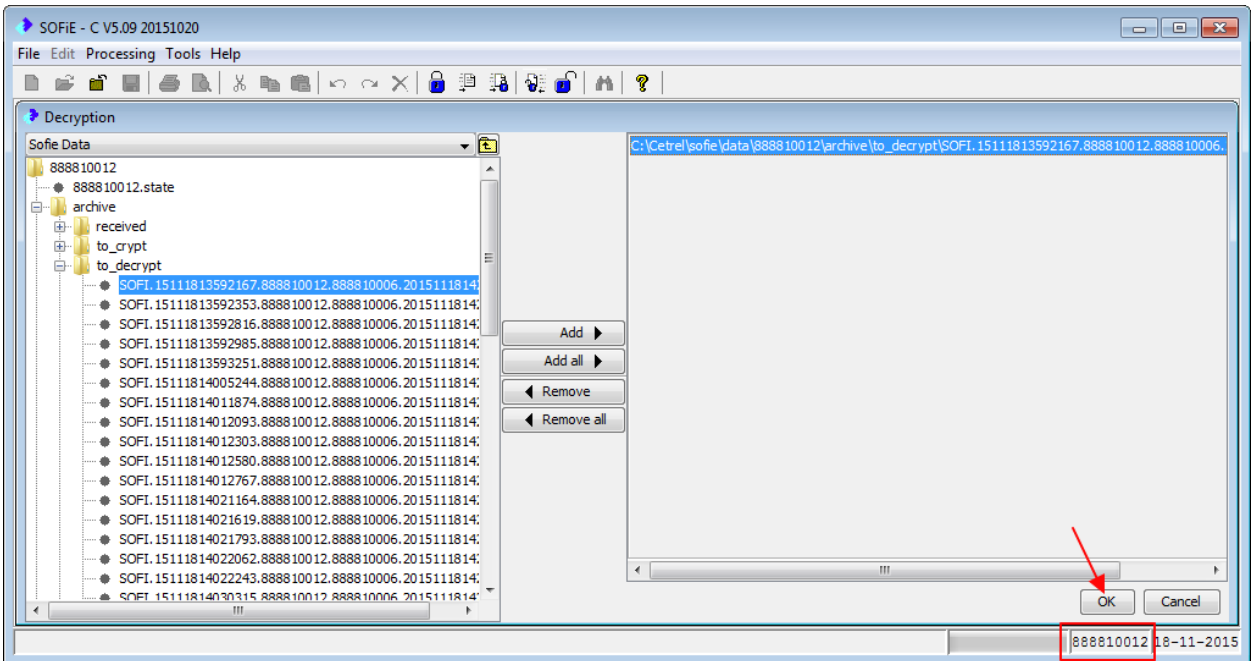
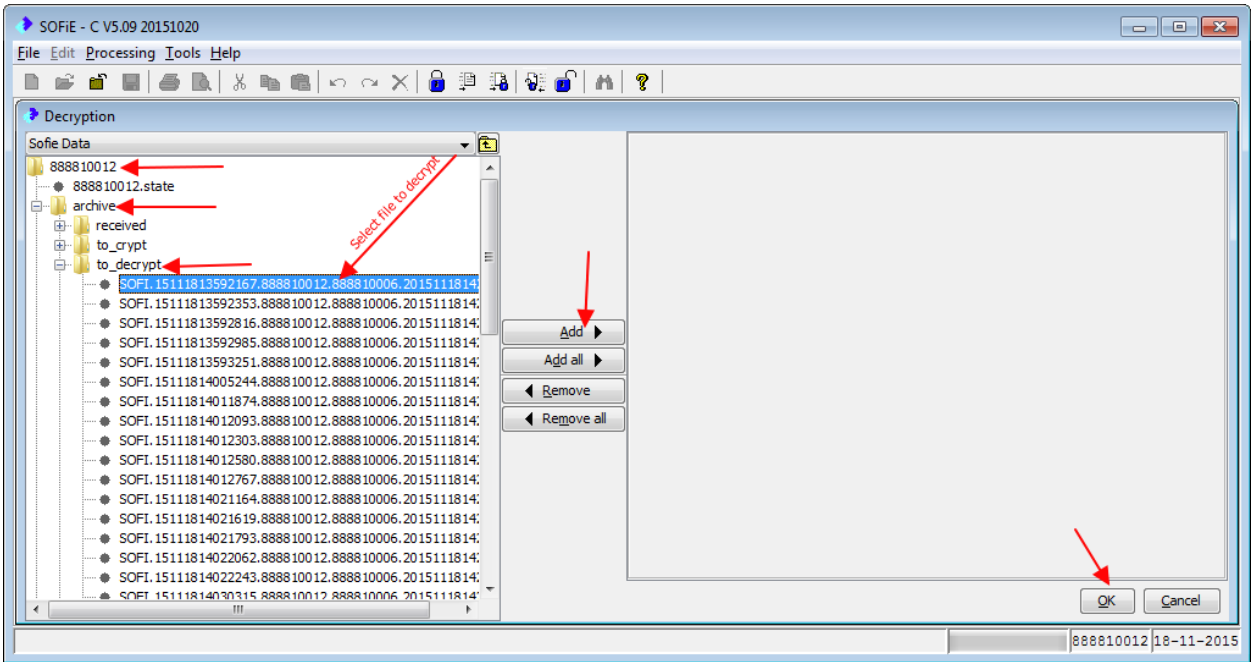
## SOFiE-SORT (Manual) decrypt process with Transport module

### 4- Decrypt a file manually

Find the file that has to be decrypted. (ex SOFiE\_HOME\data\888810012\archive\to\_decrypt)

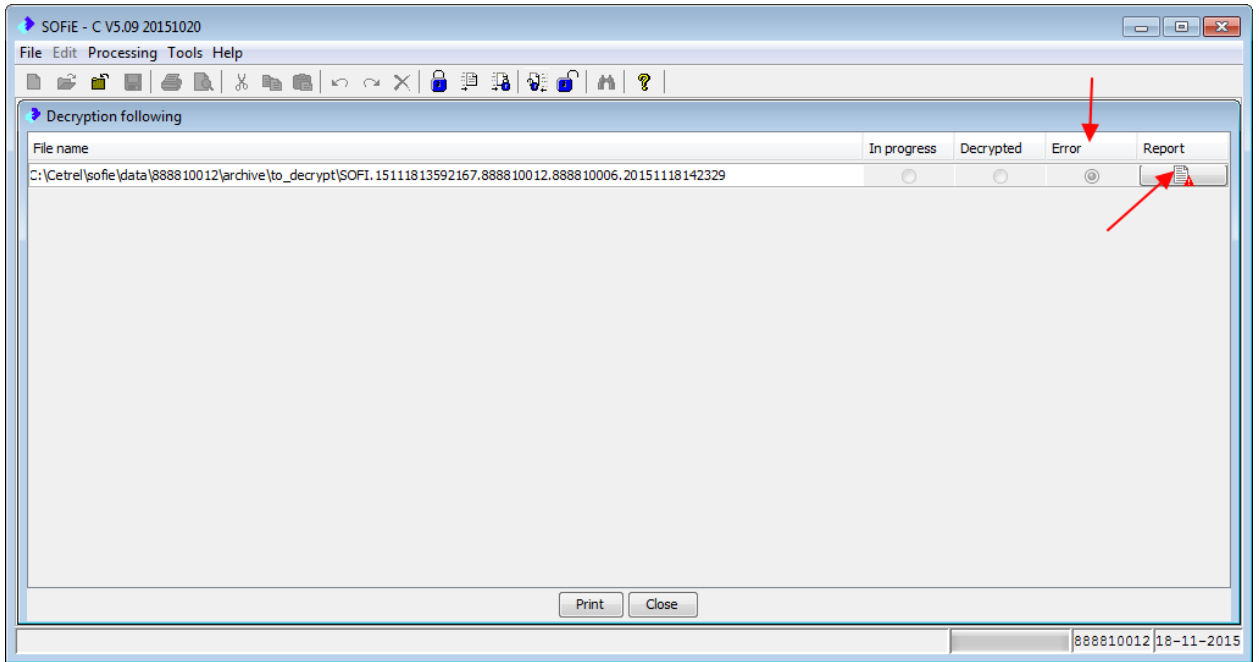


Browse and select the file to decrypt.



In case of error, a reporting log is generated.





Example of error report information for this case of error

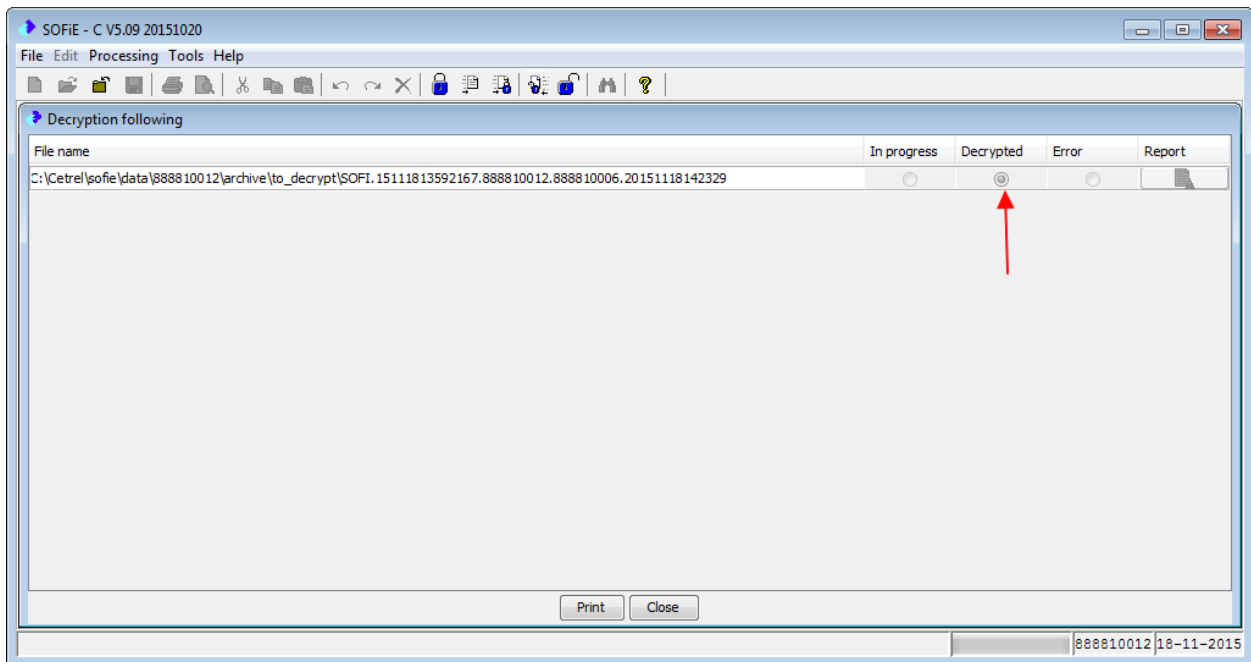
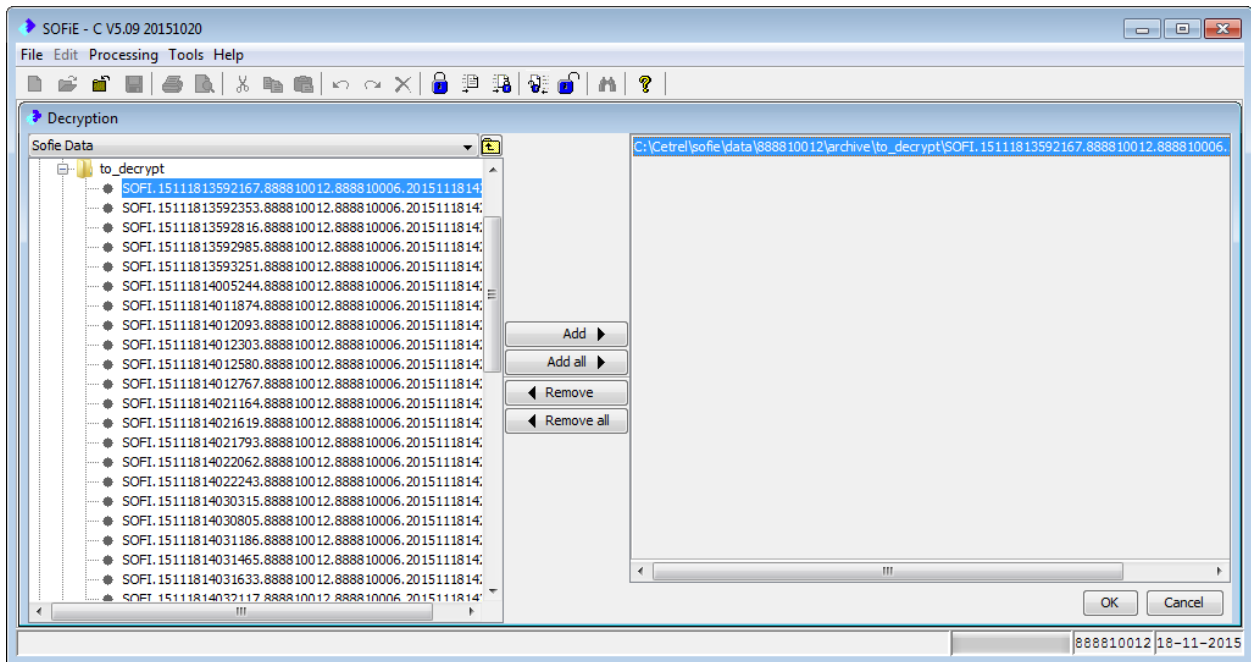
reason:

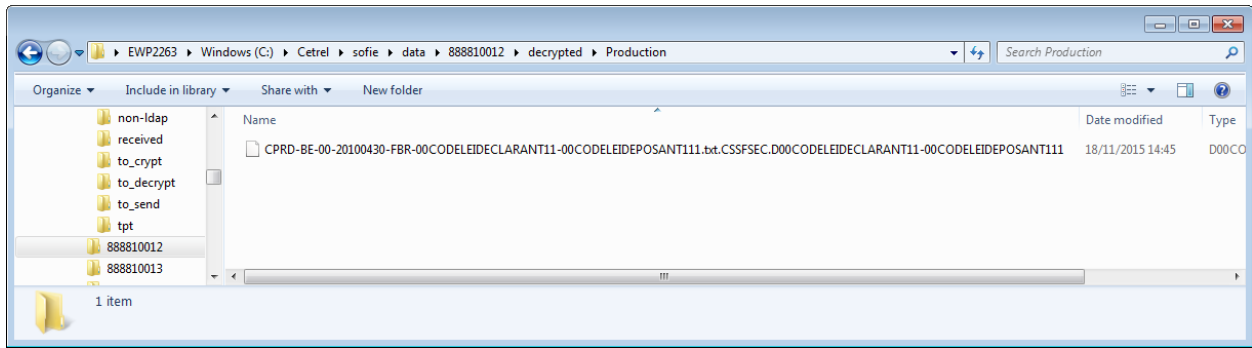
=====

Decryption failed : [CETREL\_FRAMEWORK\_3045] : **Destination file**  
C:\Cetrel\sofie\.\data\888810012\decrypted\Production\CPRD-BE-00-20100430-FBR-  
00CODELEIDECLARANT11-  
00CODELEIDEPOSANT111.txt.CSSFSEC.D00CODELEIDECLARANT11-  
00CODELEIDEPOSANT111 **exists and won't be overwritten automatically.**

If we want to decrypt the file again, in this case we have first to remove the decrypted file from decrypted\Production folder.

Successful decryption.



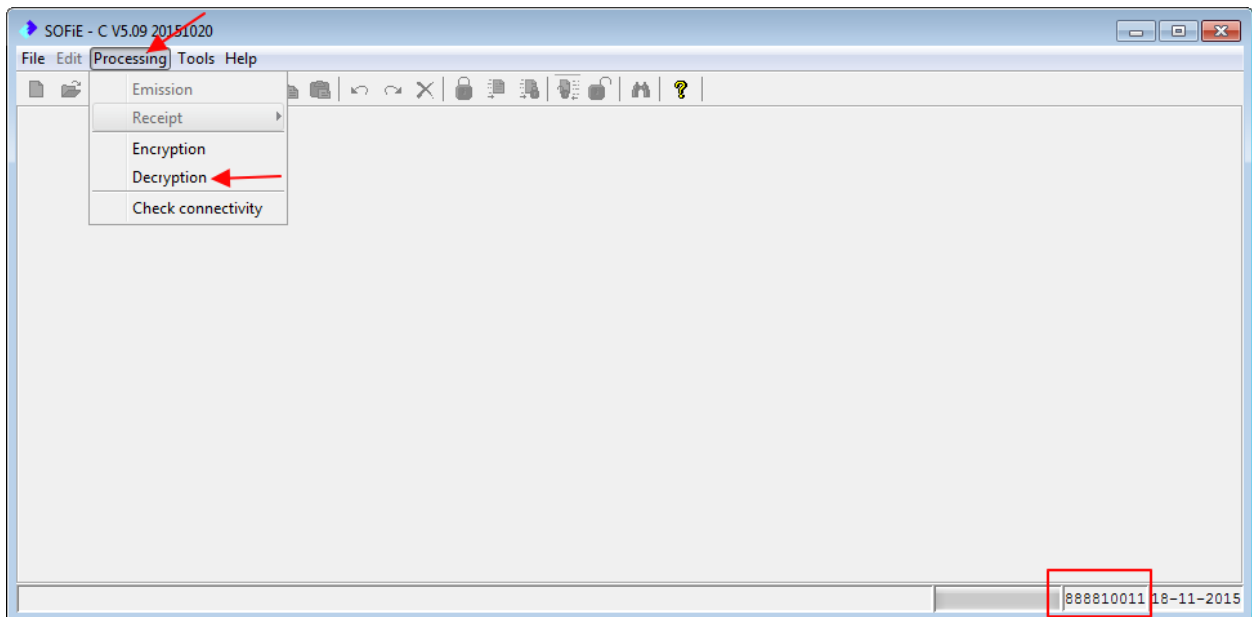


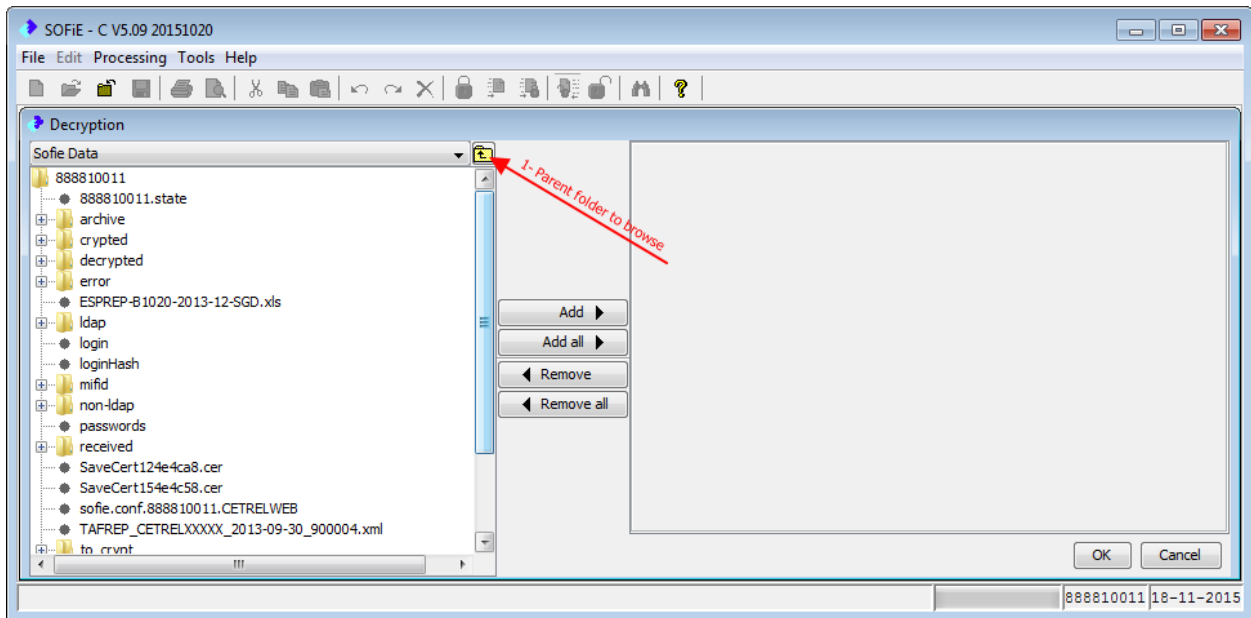
Now we have to decrypt the file again, in order to be able to read its content.

## SOFiE-SORT Decrypt process with crypt module

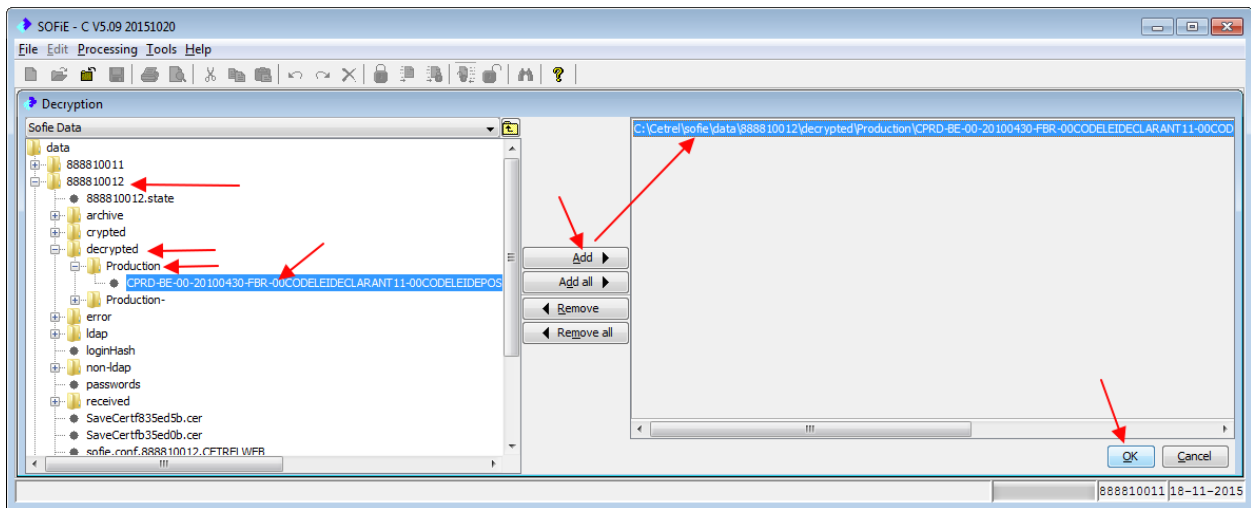
5- Decrypt the file in crypt module

Start Encryption user here 888810011

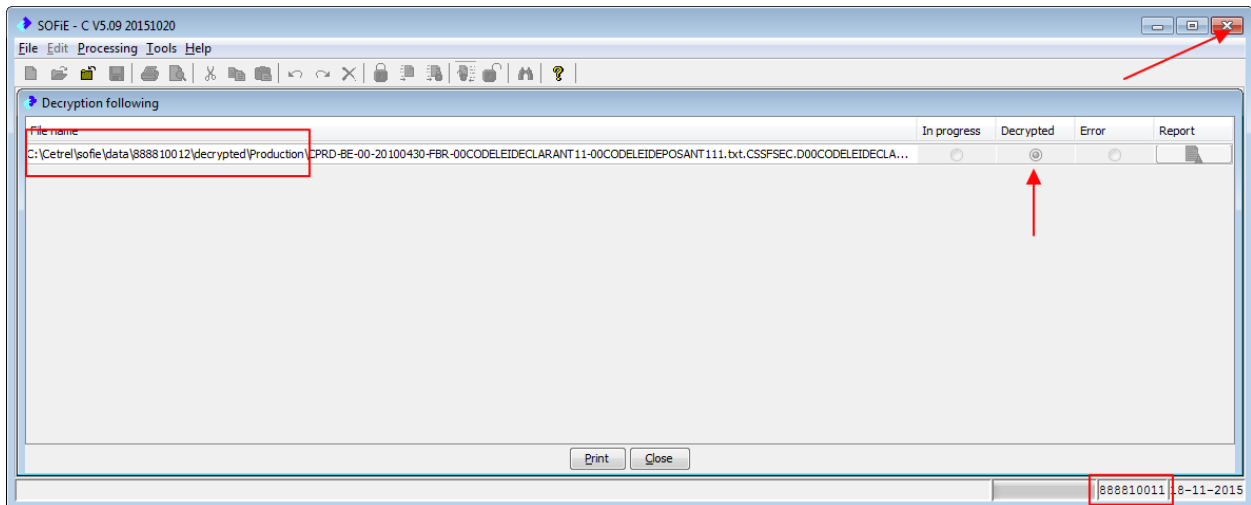




Select the file decrypted previously on the Transport folder



File successfully decrypted.



## SOFiE-SORT How to read the decrypted file.

We can read the file using external tools, example Notepad, but you can use other programs or editors.

