

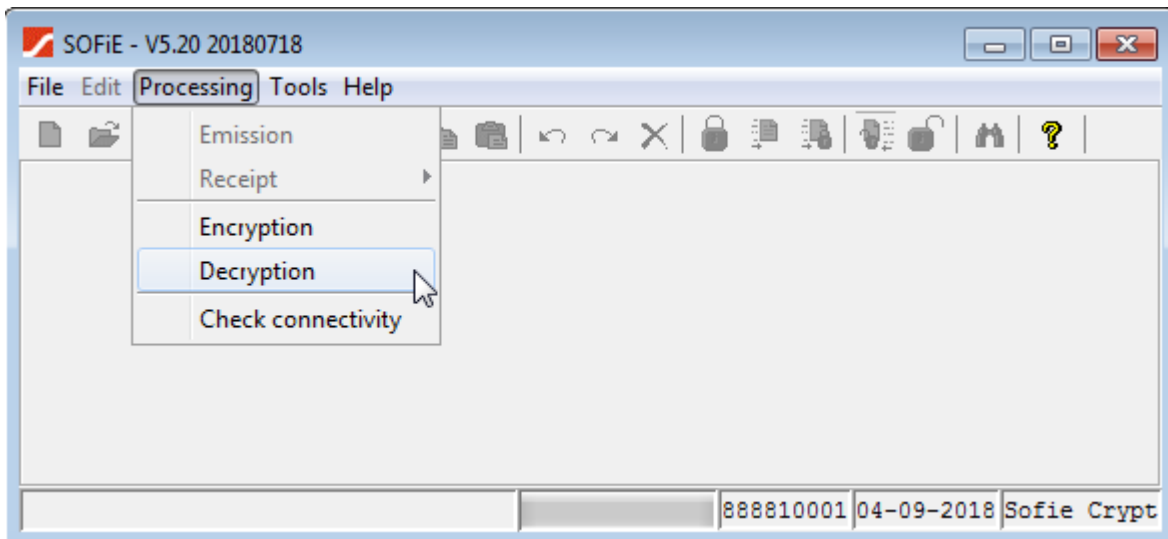
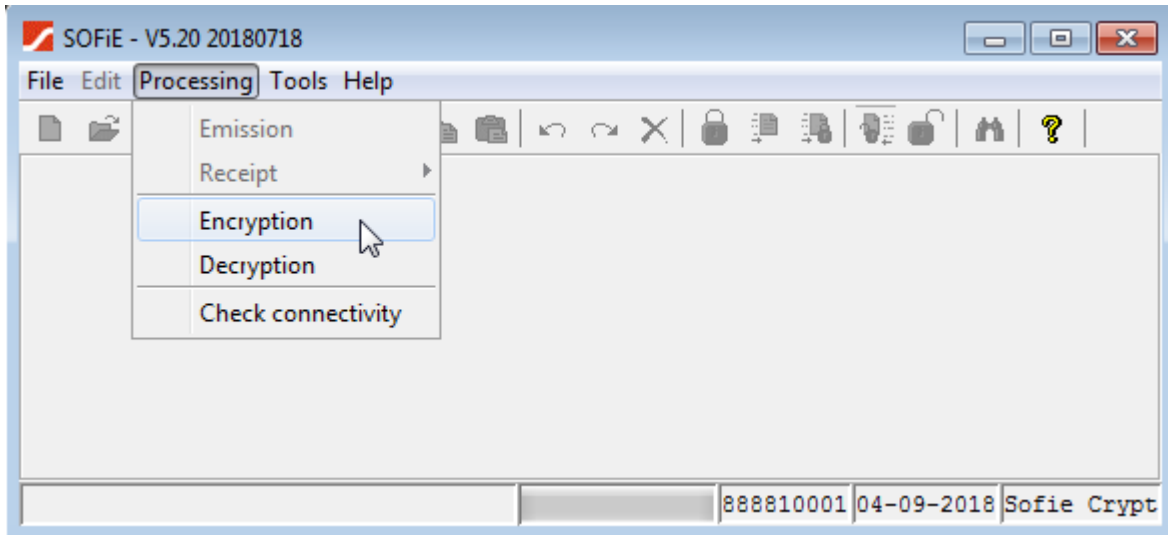
Sofie GUI - Setting Up Default Folder

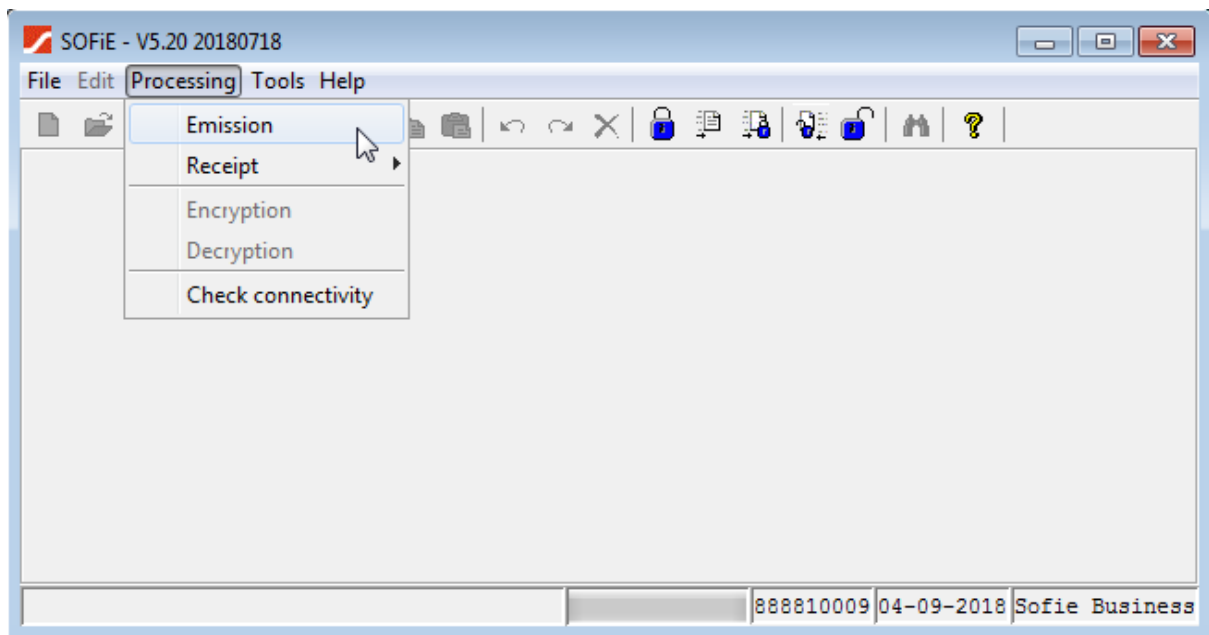
1 Contents

1	Contents	2
2	Introduction	3
	2.1 Scope of this document.....	3
	2.2 Out of scope	4
	2.3 Prerequisite.....	4
3	Setting up the new properties.....	5
4	Implementation examples	6
5	CONTACTS	8
	5.1 SOFiE Business.....	8
	5.2 SOFiE S.O.R.T (legal reporting)	8

2 Introduction

2.1 Scope of this document





2.2 Out of scope

This document does not explain how SOFiE works or how to edit a text file, even when the extension of its name is not ".txt".

2.3 Prerequisite

You have an operational SOFiE client. You know the SOFiE ID and the corresponding password. You have the necessary rights on the files to be able to modify them.

3 Setting up the new properties

In the “Processing” menu, when a SOFiE user chooses one of the 3 items (Emission, Encryption or Decryption), a window opens and is displayed in the left part the tree structure of a directory. Currently the SOFiE client opens the user’s data directory, more precisely the directory defined in the property “properties.interface.defaultDirectory” (file: interface/general.properties) which is by default set to “data ”.

Now, 2 new properties can be defined to open a different directory. They are set in the file “<userId>.client.properties” file and are named:

- sofie.client.<userId>.encryption.gui.folder
- sofie.client.<userId>.decryption.gui.folder

Each of these properties can be set to 3 different values:

1. **DEFAULT** : if the property value is set to DEFAULT (case sensitive), then the default directory listed in the window will be the one defined by properties.interface.defaultDirectory, therefore the client will continue to behave as it has until now.
2. **LAST_USED** : in this case the directory listed will be the one that was used last so if you come to find a file in a different directory than the one currently used, it will be saved and resumed the next time you open the window. This value is saved in the file data\<userId>\lastUsed as key=value :
 - decryption.gui.folder.lastused
 - encryption.gui.folder.lastused
3. **specifically defined directory**: in this case it is possible to define a fixed directory on which the window will be open, for example: “C:\test\to_Send”

Note: for the SOFiE client to behave like until now, it is necessary:

- not to define any of the 2 new properties
- or to set these 2 new properties to the value “DEFAULT”

Example:

File %UID%.client.properties

- sofie.client.%UID%.encryption.gui.folder=DEFAULT
- sofie.client.%UID%.decryption.gui.folder=DEFAULT

4 Implementation examples

In these examples, the Sofie profile is in the folder “C:\cetrel\sofie” and the SOFiE ID (UID) is 999903388.

The client’s properties file is named “999903388.client.properties” and is located in the folder “C:\Cetrel\sofie\properties\clients”.

Example A: Keep same behaviour

You could add the following lines to the client.properties file although it would not give any benefit.

```
sofie.client.999903388.encryption.gui.folder=DEFAULT
```

```
sofie.client.999903388.decryption.gui.folder=DEFAULT
```

Example B: Save last used folder

Set both properties to the respective last used folder.

```
sofie.client.999903388.encryption.gui.folder=LAST_USED
```

```
sofie.client.999903388.decryption.gui.folder=LAST_USED
```

Example C: Set the properties to a specific folder

Set both properties to a specific folder. Please remember to use double backslash characters to encode a single backslash in the folder path under Windows. A backslash is also needed before a colon.

```
sofie.client.999903388.encryption.gui.folder=Q:\Ready_to_send
```

```
sofie.client.999903388.decryption.gui.folder=Q:\From_Sofie_Transport
```

Example D: Set only one of the properties

You do not necessarily have to set both of the new properties. Let’s only set one of them.

```
sofie.client.999903388.encryption.gui.folder=Q:\Ready_to_send
```

Example E: Combining several possibilities.

```
sofie.client.999903388.encryption.gui.folder=Q:\Ready_to_send
```

```
sofie.client.999903388.decryption.gui.folder=LAST_USED
```

Example F: setting to a relative folder path

This will set the folder opened by the encryption menu to a subfolder of the current Sofie Home folder. In this example it is “C:\cetrel\sofie”.

```
sofie.client.999903388.encryption.gui.folder=some_folder\Ready_to_send
```

Example E: Mixing the different possibilities:

```
sofie.client.999903388.encryption.gui.folder=Q:\\Ready_to_send_send  
sofie.client.999903388.decryption.gui.folder=LAST_USED
```

So, the final path to the folder is “C:\cetrel\sofie\some_folder\Ready_to_send”.

Note: The lines added to the properties file should contain no leading blank or tab character.

5 CONTACTS

5.1 SOFiE Business

- Contract sales or technical questions:
 - Tel: (+352) 355 66 - 600
 - Email: sofie.lux@worldline.com

5.2 SOFiE S.O.R.T (legal reporting)

- Contract for sales questions:
 - Phone (+352) 355 66 – 424
 - Email: reporting@cetrel-securities.lu

- Technical questions:
 - Phone: (+352) 355 66 600
 - Email: sofie.lux@worldline.com