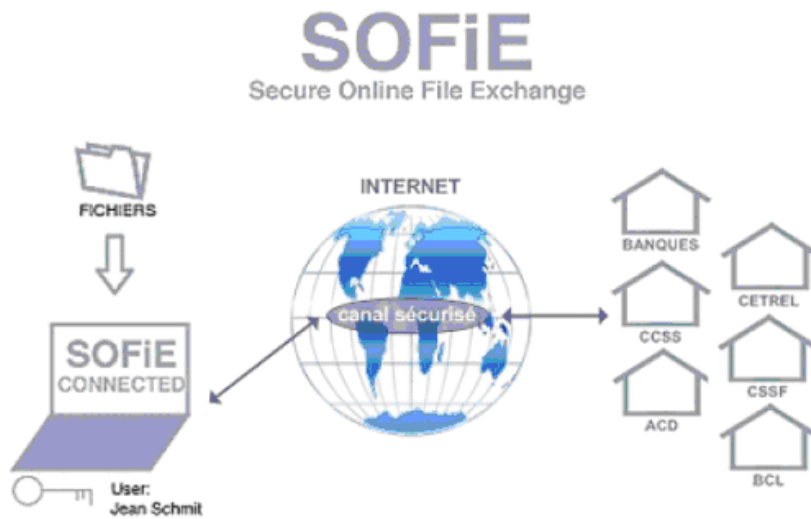




User Manual:

INSTALLATION OF A SOFiE CONFIGURATION FILE

V1.43



1. INTRODUCTION

- Installation of a SOFiE configuration file is required each time you receive one from SIX Payment Services.
- The configuration file is named *sofie.<user>.<file_creation_date>.config* and is attached to an informative e-mail. You receive the e-mail in the following cases:
 - When finalizing the installation of your new Luxtrust certificate.

Madam, Sir

We acknowledge receipt of your certificate.

In attachment you will find a configuration file to be imported in SOFiE in order to complete your installation.

Save the file within your SOFiE_HOME directory (e.g. C:\Cetrel\Sofie), keeping the original file name (sofie.xxxxxxxx.config).

Delete all the files from folder <SOFiE_HOME>\tmp before importing the configuration file.

Start the program SOFiE, a wizard will request you to import the configuration file:

1. Select the configuration file that you have just saved in your SOFiE_HOME directory.
2. Click on the button "Next".

SOFiE will import the file and complete the configuration wizard.

For further information, please refer to the online documentation on www.sofie.lu or contact our HelpDesk: at (+352) 3 55 66-600 or at helpdesk.lux@six-payment-services.com.

Best Regards,

- When you are working in non-LDAP mode and a change has been made in your SOFiE contract or in one of your recipients (or if the latter has renewed his keys).

Madam, Sir

We acknowledge receipt of your request for modification of contract.

The modification requires a change in your SOFiE configuration. Attached you will find a file containing your new configuration file.

Save the file within your SOFiE_HOME directory (e.g. C:\Cetrel\Sofie), keeping the original file name (sofie.xxxxxxxx.config).

Delete all the files from folder <SOFiE_HOME>\tmp before importing the configuration file.

Login into the application SOFiE, then go to menu "Tools->User configuration file import":

1. Select the configuration file that you have just saved in your SOFiE_HOME directory.
2. Click on the button "Open".

SOFiE will import the file and complete the configuration wizard.

For further information, please refer to the online documentation on www.sofie.lu or contact our HelpDesk: at (+352) 3 55 66-600 or at helpdesk.lux@six-payment-services.com.

Best Regards,



We strongly recommend you to install as soon as possible any *sofie.config* file SIX Payment Services sends you. The non-installation may have impacts on your next file transfer. SIX Payment Services may not be hold responsible for any problem if you do not follow this

2. INSTALLATION PROCEDURE

2.1 Prerequisite

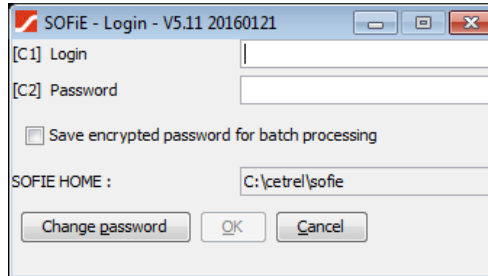
- Save the new configuration file (see the e-mail sent by SIX Payment Services) in your SOFiE_HOME folder.
- A configuration file can only be installed through the graphical interface (GUI). If the batch mode is currently running, you need to stop it before starting the installation.
- Depending on the reason behind the installation of configuration file, the installation procedure differs:
 - If you are installing a certificate follow paragraph 2.2.
 - If you contract is being changed, follow paragraph 2.3.

2.2 Configuration file import (certificate installation)

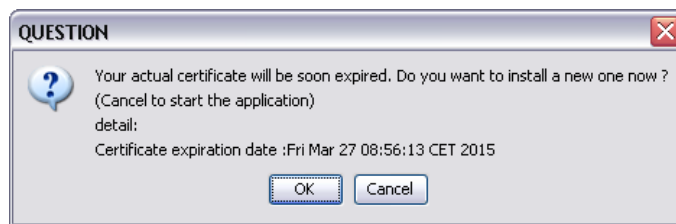
- Start the SOFiE GUI:

- On Windows, use the SOFiE icon on your desktop (or the script *run_gui.bat* located in <SOFIE_HOME>\bin)
- On Unix: run the script *run_gui.ksh* located in <SOFIE_HOME>/bin

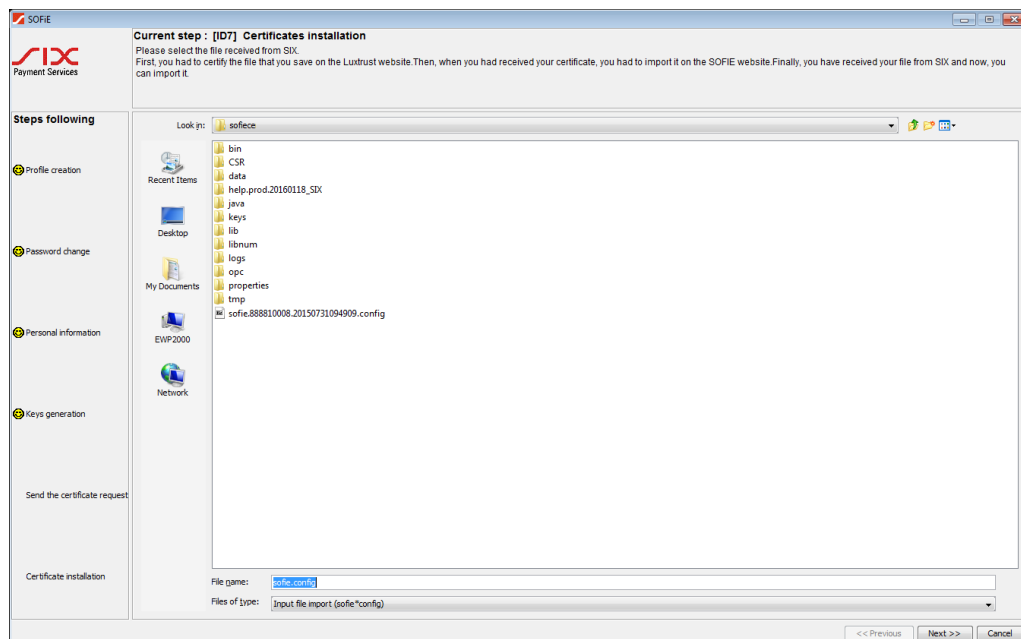
➤ Enter your *user* and *password* and log into the application.



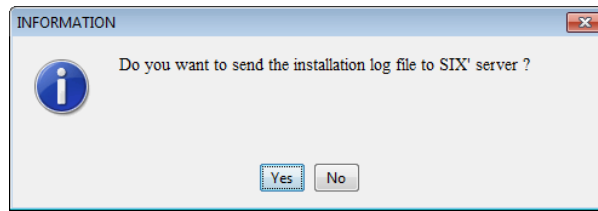
➤ A window inviting you to install a new certificate opens (the message displayed varies depending on the current state of your certificate). Click on *OK* button:



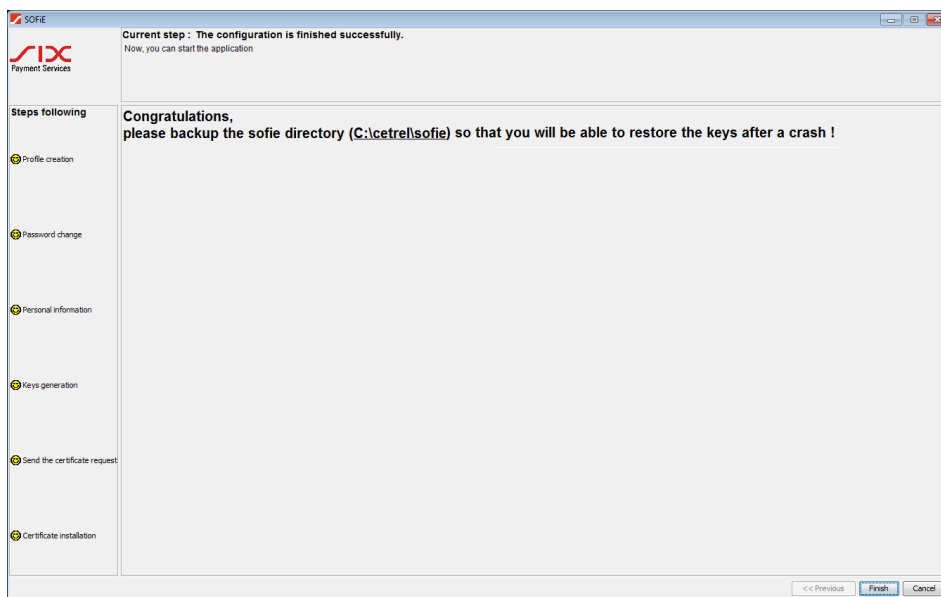
➤ You are invited to select the *sofie...config* file. Once selected, click on *Next* button to install it :



- If file import succeeds, you are invited to send the installation report to Cetrel. Select **YES**:



- A congratulations message is displayed. Click on *Finish* to end the renewal procedure.

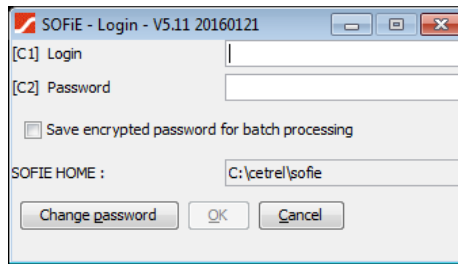


- The application is automatically shut down. You can now use SOFiE as before. If the batch was running before the installation, don't forget to start it again.

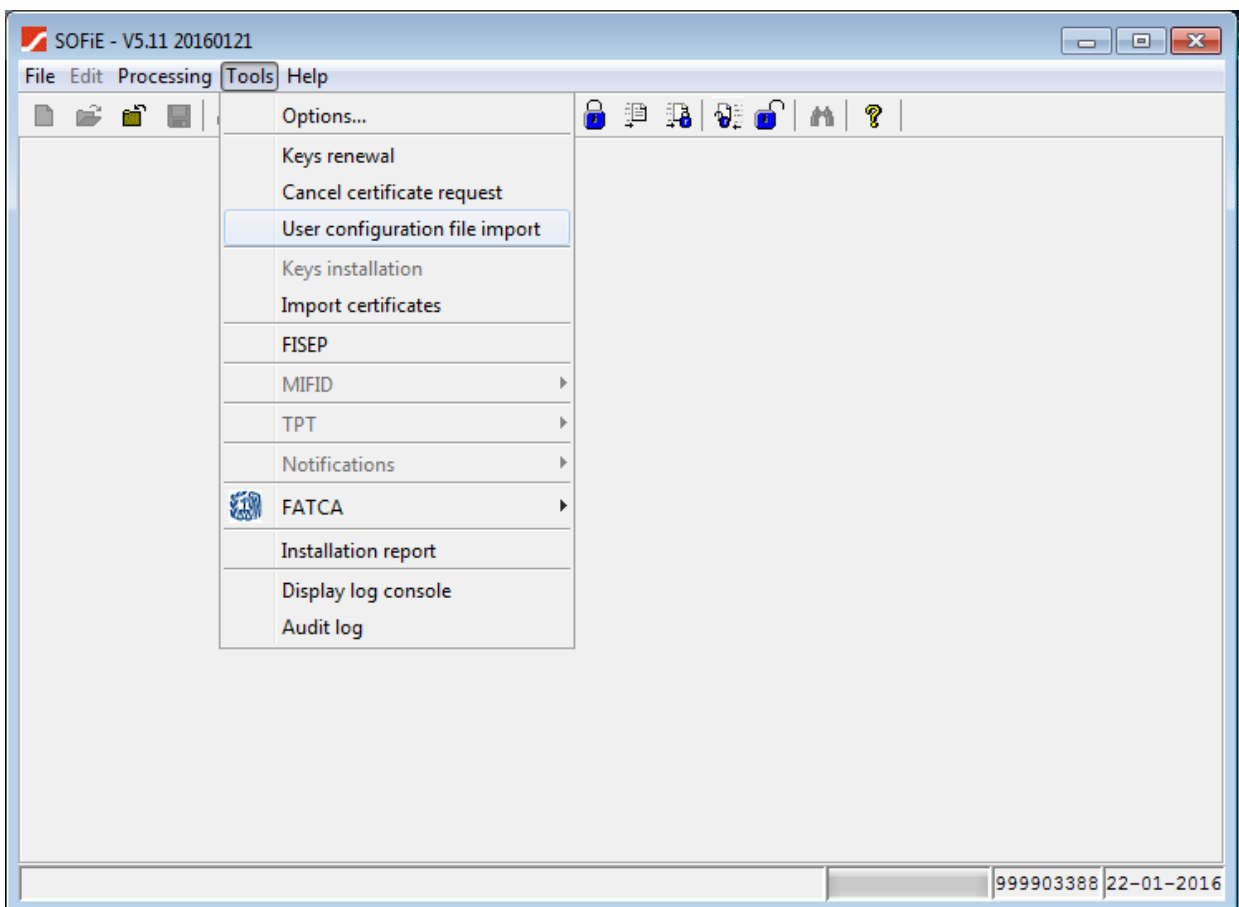
2.3 [Configuration file import \(contract change\)](#)

- Start the SOFiE GUI:
 - On Windows, use the SOFiE icon on your desktop
 - On Unix: run the script `run_gui.ksh` located in `<SOFIE_HOME>/bin`

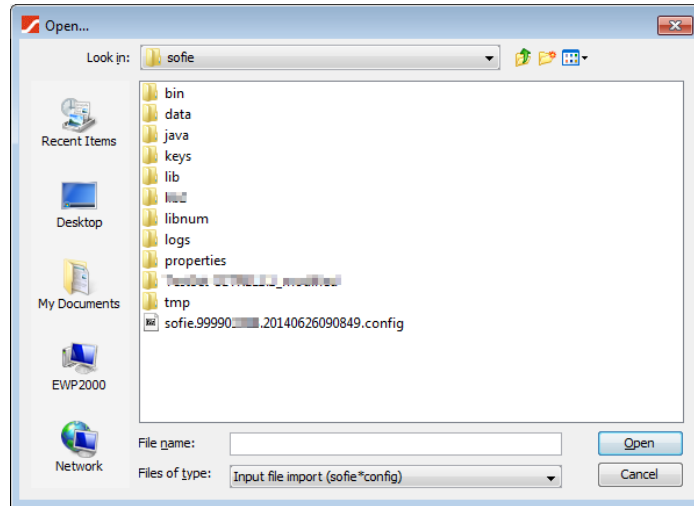
- Enter your *user* and *password* and log into the application.



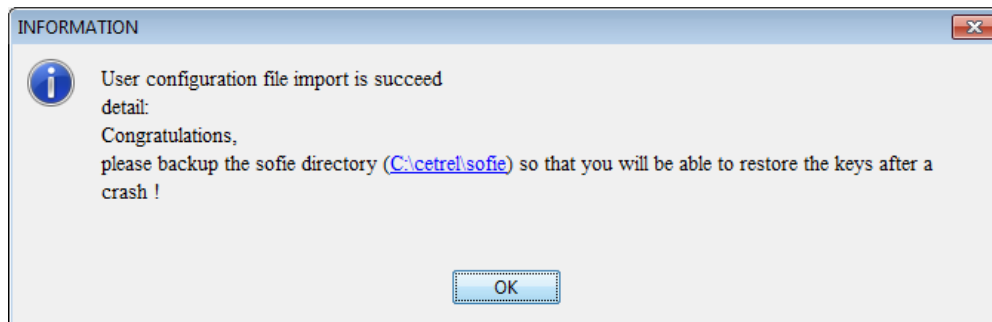
- In the main menu, select “Tools->User configuration file import”:



- Select the new configuration file you have received and click on the *open* button.



- The following message is displayed if the import is successful. Click on *OK* button.



- The application is automatically shut down. You can now use SOFiE as before. If the batch was running before the installation, don't forget to start it again.

3. CONTACTS

3.1 Technical questions

- Phone: (+352) 3 55 66 - 600
- Email: Helpdesk.Lux@six-payment-services.com