

# Mounting plate or swivel base for YOMANI

## User guide

Use the mounting plate or swivel base to install your YOMANI terminal on a countertop or another surface. This ensures the payment terminal is stable and provides the best possible cable connection.

### INSTALLING THE MOUNTING PLATE

#### Preparation

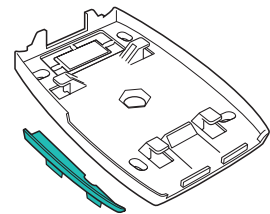
Remove the side flap on the mounting plate by firmly pressing inward.

#### Installation

Place the mounting plate on a flat surface.

Please note the following points:

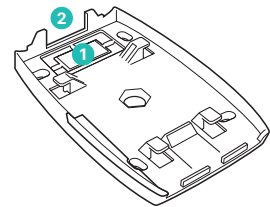
- Make sure that there is sufficient space to route cables into the back of the payment terminal.
- Use either four suitable screws or a strong, double-sided adhesive tape to attach the mounting plate to the surface.



#### Cable routing

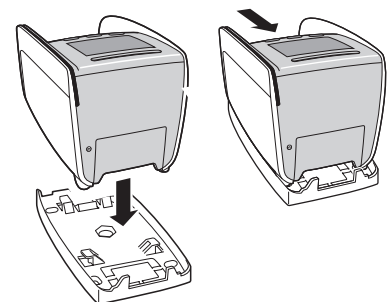
The cables can be routed as follows:

- 1 Through the lower opening  
This method of cable routing requires a hole in your counter for the cables to pass through. To use this option, remove the flap on the mounting plate.
- 2 Route the cables through the opening at the back.



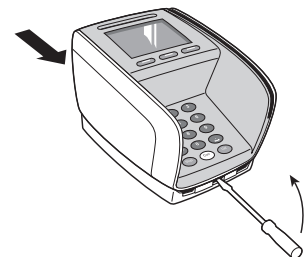
#### Mounting the YOMANI terminal

1. Pull the cables through the cable opening and ensure that the cable is long enough.
2. Place the terminal on the mounting plate.
3. Slide the YOMANI terminal toward the back of the mounting plate until it snaps into place.



#### Removing the YOMANI terminal

To remove the YOMANI terminal from its mounting plate, use a flat tool (max. 2 mm thickness, approx. 40 mm in length). Carefully insert the tool between the payment terminal and the mounting plate, and lift the tool slightly until it snaps out of the lock. At the same time, slide the payment terminal slightly forward and out of the mounting plate.



## INSTALLING THE SWIVEL BASE

---

### Preparation

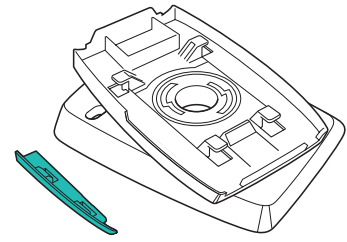
Remove the side flap on the swivel base by firmly pressing inward.

### Installation

Place the swivel base on a level surface.

Please note the following points:

- Make sure that there is sufficient space to route cables into the back of the payment terminal.
  - The swivel base rotates max. 270°. Note the end points of the swivel movement.
  - The swivel base has rubber pads to provide stability and protect the surface from scratches.
  - The swivel base can also be screwed onto the countertop using four suitable screws.
- 

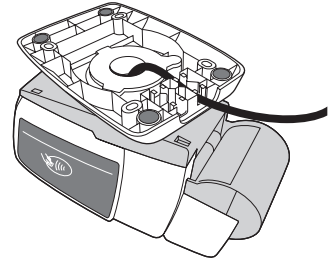


### Mounting the YOMANI terminal

Route the cables through the cable opening on the swivel base. Attach the payment terminal to the swivel base as described in the previous instructions for the mounting plate in this section. Rotate the YOMANI and attach the cables in the cable guide to the bottom of the swivel base.

### Removing the YOMANI terminal

Remove the payment terminal from the swivel base as described in the previous instructions for the mounting plate in this section.



Your local point of contact can be found at: [worldline.com/merchant-services/contacts](https://worldline.com/merchant-services/contacts)

