

# Installing the turntable/fixing plate

## Supplement to the existing operating instructions for the xenta payment terminal

This supplementary sheet contains extra information to the existing operating instructions for the xenta COMPACT, xenta AUTONOM and xenta PINPAD. It describes how to install the turntable and the fixing plate.

### 1. Placement

Unpack the turntable or fixing plate and position it in the desired location. The following points should be observed:

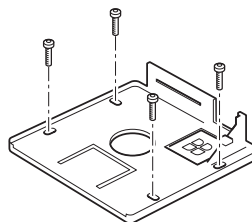
- Make sure you leave enough space for the payment terminal cabling.
- The turntable rotates through a maximum of 270°. You should take this into account when choosing the position.

The turntable comes equipped with rubber feet which protect the mat from scratching.

### 2. Assembly

Once you have chosen the location, you can install the turntable and/or screw down the fixing plate.

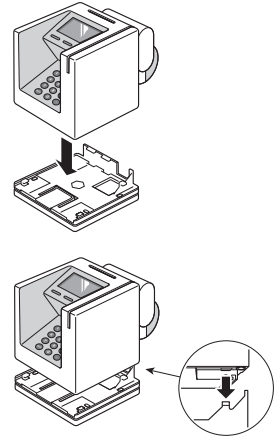
The turntable can also be screwed down if necessary.



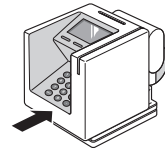
Screwing down the fixing plate

### Installing the terminal

Place the xenta on the turntable from above. The installation grooves are offset from the final position by around 7 mm.



Then carefully push the terminal backwards until the locking mechanism clicks.

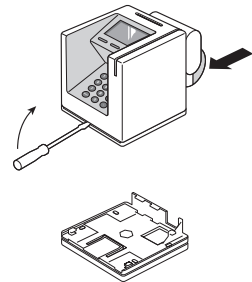


The fixing plate is now full installed and the turntable is ready to use.



### 3. Removing the terminal from the turntable or fixing plate

In order to remove the terminal from the turntable or the fixing plate, you need to insert a flat tool (no more than 2 mm thick and around 40 mm in length) into the slit between the terminal and the turntable.



Slightly depress the locking mechanism

Your personal contact: [www.six-payment-services.com/contact](http://www.six-payment-services.com/contact)

**SIX Payment Services Ltd**  
Hardturmstrasse 201  
8005 Zurich  
Switzerland

**SIX Payment Services (Europe) S.A.**  
10, rue Gabriel Lippmann  
5365 Munsbach  
Luxembourg